

GTF2F2 Polyclonal Antibody

Catalog Number:E-AB-64677

Note: Centrifuge before opening to ensure complete recovery of vial contents.

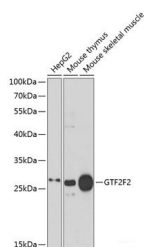
Description

Reactivity	Human,Mouse
Immunogen	Recombinant fusion protein of human GTF2F2 (NP_004119.1).
Host	Rabbit
Isotype	IgG
Purification	Affinity purification
Conjugation	Unconjugated
Formulation	PBS with 0.02% sodium azide, 50% glycerol, pH7.3.

Applications Recommended Dilution

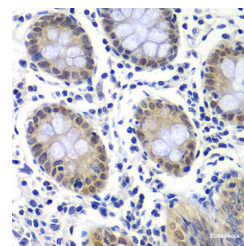
WB	1:500-1:2000
IHC	1:50-1:200
IF	1:50-1:200

Data

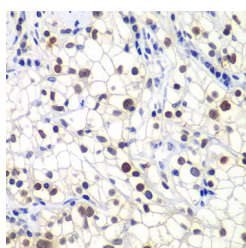


Western blot analysis of extracts of various cell lines using GTF2F2 Polyclonal Antibody at dilution of 1:1000.

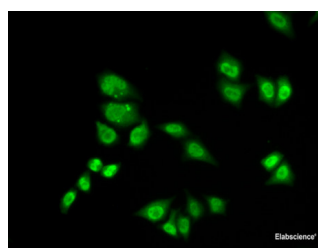
Observed Mw:28kDa
Calculated Mw:28kDa



Immunohistochemistry of paraffin-embedded Human colon using GTF2F2 Polyclonal Antibody at dilution of 1:200 (40x lens).



Immunohistochemistry of paraffin-embedded Human kidney cancer using GTF2F2 Polyclonal Antibody at dilution of 1:200 (40x lens).



Immunofluorescence analysis of A549 cells using GTF2F2 Polyclonal Antibody

Preparation & Storage

Storage Store at -20°C. Avoid freeze / thaw cycles.

Background

For Research Use Only

A Reliable Research Partner in Life Science and Medicine

Toll-free: 1-888-852-8623

Web: www.elabscience.com

Tel: 1-832-243-6086

Email: techsupport@elabscience.com

Fax: 1-832-243-6017

GTF2F2 Polyclonal Antibody

Catalog Number:E-AB-64677



GTF2F2 (General Transcription Factor IIF Subunit 2) is a Protein Coding gene. Among its related pathways are RNA Polymerase II Transcription Initiation And Promoter Clearance and Signaling by FGFR2 in disease. Gene Ontology (GO) annotations related to this gene include helicase activity and ATP-dependent helicase activity.

For Research Use Only

A Reliable Research Partner in Life Science and Medicine

Toll-free: 1-888-852-8623

Web: www.elabscience.com

Tel: 1-832-243-6086

Email: techsupport@elabscience.com

Fax: 1-832-243-6017