

## MCM5 Polyclonal Antibody

**Catalog No.** E-AB-64688

*Note:* Centrifuge before opening to ensure complete recovery of vial contents.

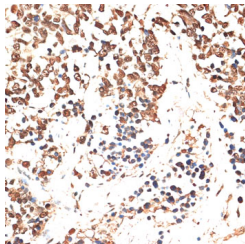
### Description

<b>Reactivity</b>	Human,Mouse,Rat
<b>Immunogen</b>	Recombinant fusion protein of human MCM5 (NP_006730.2).
<b>Host</b>	Rabbit
<b>Isotype</b>	IgG
<b>Purification</b>	Affinity purification
<b>Conjugation</b>	Unconjugated
<b>Buffer</b>	PBS with 0.02% sodium azide, 50% glycerol, pH7.3.

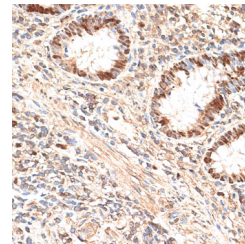
### Applications Recommended Dilution

<b>IHC</b>	1:50-1:200
<b>IF</b>	1:50-1:200

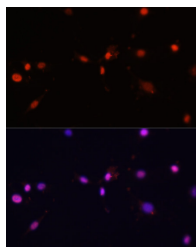
### Data



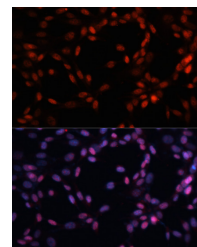
Immunohistochemistry of paraffin-embedded Human lung cancer using MCM5 Polyclonal Antibody at dilution of 1:100 (40x lens).



Immunohistochemistry of paraffin-embedded Human appendix using MCM5 Polyclonal Antibody at dilution of 1:100 (40x lens).

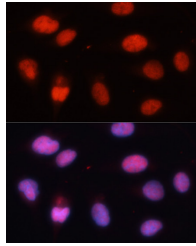


Immunofluorescence analysis of C6 cells using MCM5 Polyclonal Antibody at dilution of 1:100. Blue: DAPI for nuclear staining.

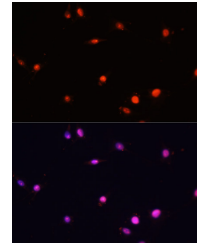


Immunofluorescence analysis of NIH-3T3 cells using MCM5 Polyclonal Antibody at dilution of 1:100. Blue: DAPI for nuclear staining.

### For Research Use Only



Immunofluorescence analysis of U-2 OS cells using MCM5 Polyclonal Antibody at dilution of 1:100.  
Blue: DAPI for nuclear staining.



Immunofluorescence analysis of C6 cells using MCM5 Polyclonal Antibody at dilution of 1:100.  
Blue: DAPI for nuclear staining.

## Preparation & Storage

**Storage** Store at -20°C. Avoid freeze / thaw cycles.

## Background

The protein encoded by this gene is structurally very similar to the CDC46 protein from *S. cerevisiae*, a protein involved in the initiation of DNA replication. The encoded protein is a member of the MCM family of chromatin-binding proteins and can interact with at least two other members of this family. The encoded protein is upregulated in the transition from the G0 to G1/S phase of the cell cycle and may actively participate in cell cycle regulation.