

MDH2 Polyclonal Antibody

Catalog No. E-AB-64689

Note: Centrifuge before opening to ensure complete recovery of vial contents.

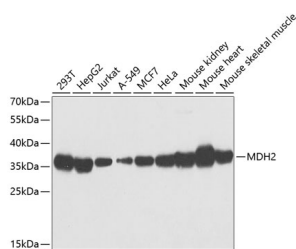
Description

| | |
|---------------------|---------------------------------------------------------|
| Reactivity | Human, Mouse |
| Immunogen | Recombinant fusion protein of human MDH2 (NP_005909.2). |
| Host | Rabbit |
| Isotype | IgG |
| Purification | Affinity purification |
| Conjugation | Unconjugated |
| Buffer | PBS with 0.02% sodium azide, 50% glycerol, pH7.3. |

Applications Recommended Dilution

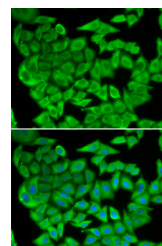
WB 1:500-1:2000 IF
1:50-1:200

Data



Western blot analysis of extracts of various cell lines using MDH2 Polyclonal Antibody at dilution of 1:1000.

Observed Mw:35kDa
Calculated Mw:30kDa/35kDa



Immunofluorescence analysis of U2OS cells using MDH2 Polyclonal Antibody

Preparation & Storage

Storage Store at -20°C. Avoid freeze / thaw cycles.

Background

Malate dehydrogenase catalyzes the reversible oxidation of malate to oxaloacetate, utilizing the NAD/NADH cofactor system in the citric acid cycle. The protein encoded by this gene is localized to the mitochondria and may play pivotal roles in the malate-aspartate shuttle that operates in the metabolic coordination between cytosol and mitochondria. Several transcript variants encoding different isoforms have been found for this gene.

For Research Use Only