

## NEDD8 Polyclonal Antibody

**Catalog No.** E-AB-64691

*Note:* Centrifuge before opening to ensure complete recovery of vial contents.

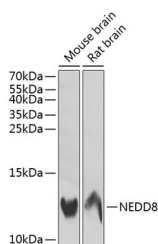
### Description

<b>Reactivity</b>	Mouse,Rat
<b>Immunogen</b>	Recombinant fusion protein of human NEDD8 (NP_006147.1).
<b>Host</b>	Rabbit
<b>Isotype</b>	IgG
<b>Purification</b>	Affinity purification
<b>Conjugation</b>	Unconjugated
<b>Buffer</b>	PBS with 0.02% sodium azide, 50% glycerol, pH7.3.

### Applications Recommended Dilution

**WB** 1:500-1:2000

### Data



Western blot analysis of extracts of various cell lines using NEDD8 Polyclonal Antibody at dilution of 1:1000.

**Observed Mw:13kDa**  
**Calculated Mw:9kDa**

### Preparation & Storage

**Storage** Store at -20°C. Avoid freeze / thaw cycles.

### Background

NEDD8 (neural precursor cell expressed, developmentally down-regulated 8) is a protein-coding gene. Diseases associated with NEDD8 include glomuvenous malformation. GO annotations related to this gene include ubiquitin protein ligase binding.

### For Research Use Only