

PSMA4 Polyclonal Antibody

Catalog No. E-AB-64697

Note: Centrifuge before opening to ensure complete recovery of vial contents.

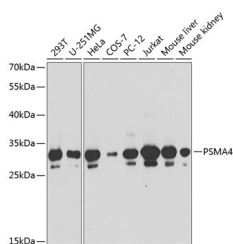
Description

Reactivity	Human,Mouse,Rat,Monkey
Immunogen	Recombinant fusion protein of human PSMA4
Host	Rabbit
Isotype	IgG
Purification	Affinity purification
Conjugation	Unconjugated
Buffer	PBS with 0.02% sodium azide,50% glycerol,pH7.3.

Applications Recommended Dilution

WB 1:500-1:2000

Data



Western blot analysis of extracts of various cell lines using PSMA4 Polyclonal Antibody at 1:1000 dilution.

Observed Mw:29kDa

Calculated Mw:21kDa/29kDa

Preparation & Storage

Storage Store at -20°C. Avoid freeze / thaw cycles.

Background

The proteasome is a multicatalytic proteinase complex with a highly ordered ring-shaped 20S core structure. The core structure is composed of 4 rings of 28 non-identical subunits; 2 rings are composed of 7 alpha subunits and 2 rings are composed of 7 beta subunits. Proteasomes are distributed throughout eukaryotic cells at a high concentration and cleave peptides in an ATP/ubiquitin-dependent process in a non-lysosomal pathway. An essential function of a modified proteasome, the immunoproteasome, is the processing of class I MHC peptides. This gene encodes a member of the peptidase T1A family, that is a 20S core alpha subunit. Three alternatively spliced transcript variants encoding different isoforms have been found for this gene.

For Research Use Only