

## TIMM17A Polyclonal Antibody

**Catalog No.** E-AB-64730

*Note:* Centrifuge before opening to ensure complete recovery of vial contents.

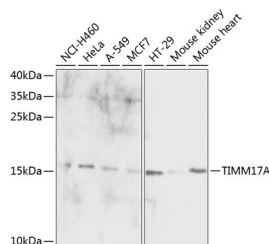
### Description

<b>Reactivity</b>	Human, Mouse
<b>Immunogen</b>	Recombinant fusion protein of human TIMM17A
<b>Host</b>	Rabbit
<b>Isotype</b>	IgG
<b>Purification</b>	Affinity purification
<b>Conjugation</b>	Unconjugated
<b>Buffer</b>	PBS with 0.02% sodium azide, 50% glycerol, pH7.3.

### Applications Recommended Dilution

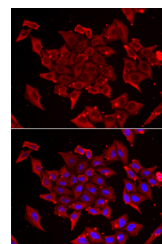
<b>WB</b>	1:500-1:2000
<b>IF</b>	1:50-1:200

### Data



Western blot analysis of extracts of various cell lines using TIMM17A Polyclonal Antibody at 1:1000 dilution.

**Observed Mw:18kDa**  
**Calculated Mw:18kDa**



Immunofluorescence analysis of U2OS cells using TIMM17A Polyclonal Antibody Blue: DAPI for nuclear staining.

### Preparation & Storage

**Storage** Store at -20°C. Avoid freeze / thaw cycles.

### Background

Essential component of the TIM23 complex, a complex that mediates the translocation of transit peptide-containing proteins across the mitochondrial inner membrane.

### For Research Use Only