

UHRF2 Polyclonal Antibody

Catalog No. E-AB-64743

Note: Centrifuge before opening to ensure complete recovery of vial contents.

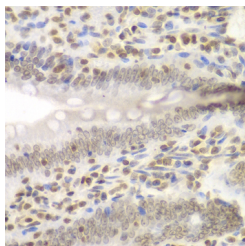
Description

Reactivity	Human,Mouse,Rat
Immunogen	Recombinant fusion protein of human UHRF2 (NP_690856.1).
Host	Rabbit
Isotype	IgG
Purification	Affinity purification
Conjugation	Unconjugated
Buffer	PBS with 0.02% sodium azide, 50% glycerol, pH7.3.

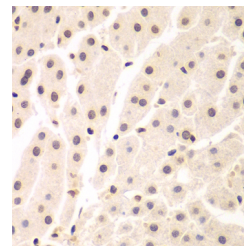
Applications Recommended Dilution

IHC	1:50-1:200
IF	1:50-1:200

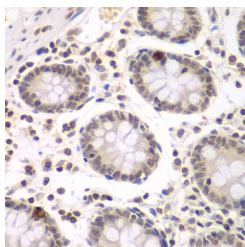
Data



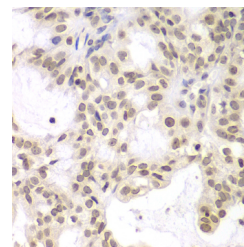
Immunohistochemistry of paraffin-embedded Rat Intestine using UHRF2 Polyclonal Antibody at dilution of 1:200 (40x lens).



Immunohistochemistry of paraffin-embedded Human liver cancer using UHRF2 Polyclonal Antibody at dilution of 1:200 (40x lens).

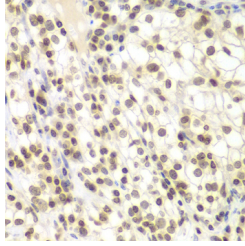


Immunohistochemistry of paraffin-embedded Human colon using UHRF2 Polyclonal Antibody at dilution of 1:200 (40x lens).

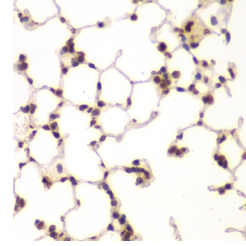


Immunohistochemistry of paraffin-embedded Human oophoroma using UHRF2 Polyclonal Antibody at dilution of 1:200 (40x lens).

For Research Use Only



Immunohistochemistry of paraffin-embedded Human kidney cancer using UHRF2 Polyclonal Antibody at dilution of 1:200 (40x lens).



Immunohistochemistry of paraffin-embedded Mouse lung using UHRF2 Polyclonal Antibody at dilution of 1:200 (40x lens).

Preparation & Storage

Storage Store at -20°C. Avoid freeze / thaw cycles.

Background

This gene encodes a nuclear protein which is involved in cell-cycle regulation. The encoded protein is a ubiquitin-ligase capable of ubiquinating PCNP (PEST-containing nuclear protein), and together they may play a role in tumorigenesis. The encoded protein contains an NIRF_N domain, a PHD finger, a set- and ring-associated (SRA) domain, and a RING finger domain and several of these domains have been shown to be essential for the regulation of cell proliferation. This protein may also have a role in intranuclear degradation of polyglutamine aggregates. Alternative splicing results in multiple transcript variants some of which are non-protein coding.

For Research Use Only