

PIH1D1 Polyclonal Antibody

Catalog Number:E-AB-64806



Note: Centrifuge before opening to ensure complete recovery of vial contents.

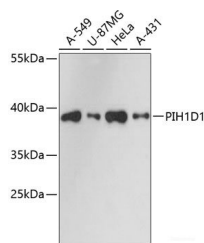
Description

Reactivity	Human
Immunogen	Recombinant fusion protein of human PIH1D1 (NP_060386.1).
Host	Rabbit
Isotype	IgG
Purification	Affinity purification
Conjugation	Unconjugated
Formulation	PBS with 0.02% sodium azide, 50% glycerol, pH7.3.

Applications Recommended Dilution

WB	1:500-1:2000
-----------	--------------

Data



Western blot analysis of extracts of various cell lines using PIH1D1 Polyclonal Antibody at dilution of 1:3000.

Observed Mw:38kDa

Calculated Mw:19kDa/21kDa/32kDa

Preparation & Storage

Storage Store at -20°C. Avoid freeze / thaw cycles.

Background

Involved in the assembly of C/D box small nucleolar ribonucleoprotein (snoRNP) particles. Recruits the SWI/SNF complex to the core promoter of rRNA genes and enhances pre-rRNA transcription . Mediates interaction of TELO2 with the R2TP complex which is necessary for the stability of MTOR and SMG1. Positively regulates the assembly and activity of the mTORC1 complex.

For Research Use Only

A Reliable Research Partner in Life Science and Medicine

Toll-free: 1-888-852-8623

Web: www.elabscience.com

Tel: 1-832-243-6086

Email: techsupport@elabscience.com

Fax: 1-832-243-6017