

SLC25A14 Polyclonal Antibody

Catalog Number:E-AB-64811

Note: Centrifuge before opening to ensure complete recovery of vial contents.

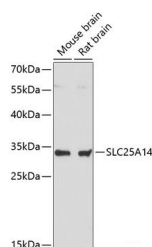
Description

Reactivity	Human,Mouse,Rat
Immunogen	Recombinant fusion protein of human SLC25A14 (NP_001269124.1).
Host	Rabbit
Isotype	IgG
Purification	Affinity purification
Conjugation	Unconjugated
Formulation	PBS with 0.02% sodium azide, 50% glycerol, pH7.3.

Applications Recommended Dilution

WB	1:500-1:2000
-----------	--------------

Data



Western blot analysis of extracts of various cell lines using SLC25A14 Polyclonal Antibody at dilution of 1:3000.

Observed Mw:36kDa
Calculated Mw:35kDa/36kDa/39kDa

Preparation & Storage

Storage Store at -20°C. Avoid freeze / thaw cycles.

Background

Mitochondrial uncoupling proteins (UCP) are members of the larger family of mitochondrial anion carrier proteins (MACP). Uncoupling proteins separate oxidative phosphorylation from ATP synthesis with energy dissipated as heat, also referred to as the mitochondrial proton leak. Uncoupling proteins facilitate the transfer of anions from the inner to the outer mitochondrial membrane and the return transfer of protons from the outer to the inner mitochondrial membrane. They also reduce the mitochondrial membrane potential in mammalian cells. This gene is widely expressed in many tissues with the greatest abundance in brain and testis. Alternative splicing results in multiple transcript variants. A pseudogene of this gene has been defined on chromosome 4.

For Research Use Only

A Reliable Research Partner in Life Science and Medicine

Toll-free: 1-888-852-8623

Web: www.elabscience.com

Tel: 1-832-243-6086

Email: techsupport@elabscience.com

Fax: 1-832-243-6017