

KLF17 Polyclonal Antibody

Catalog Number:E-AB-64813



Note: Centrifuge before opening to ensure complete recovery of vial contents.

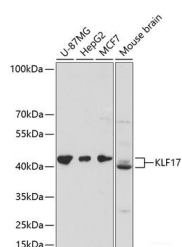
Description

Reactivity	Human,Mouse
Immunogen	Recombinant fusion protein of human KLF17 (NP_775755.3).
Host	Rabbit
Isotype	IgG
Purification	Affinity purification
Conjugation	Unconjugated
Formulation	PBS with 0.02% sodium azide, 50% glycerol, pH7.3.

Applications Recommended Dilution

WB	1:500-1:2000
-----------	--------------

Data



Western blot analysis of extracts of various cell lines using KLF17 Polyclonal Antibody at dilution of 1:3000.

Observed Mw:43kDa
Calculated Mw:42kDa

Preparation & Storage

Storage Store at -20°C. Avoid freeze / thaw cycles.

Background

KLF17 (Kruppel Like Factor 17) is a Protein Coding gene. Diseases associated with KLF17 include Breast Cancer. Gene Ontology (GO) annotations related to this gene include DNA-binding transcription factor activity and transcription regulatory region DNA binding. An important paralog of this gene is KLF10.

For Research Use Only

A Reliable Research Partner in Life Science and Medicine

Toll-free: 1-888-852-8623

Web: www.elabscience.com

Tel: 1-832-243-6086

Email: techsupport@elabscience.com

Fax: 1-832-243-6017