

## PLA2G7 Polyclonal Antibody

**Catalog No.** E-AB-64847

*Note:* Centrifuge before opening to ensure complete recovery of vial contents.

### Description

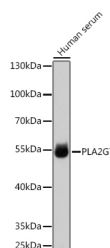
<b>Reactivity</b>	Human, Mouse
<b>Immunogen</b>	Recombinant fusion protein of human PLA2G7
<b>Host</b>	Rabbit
<b>Isotype</b>	IgG
<b>Purification</b>	Affinity purification
<b>Conjugation</b>	Unconjugated
<b>Buffer</b>	PBS with 0.01% thiomersal, 50% glycerol, pH7.3.

### Applications

### Recommended Dilution

**WB** 1:500-1:2000

### Data



Western blot analysis of extracts of Human serum using PLA2G7 Polyclonal Antibody at 1:1000 dilution.

**Observed Mw:55kDa**  
**Calculated Mw:50kDa**

### Preparation & Storage

**Storage** Store at -20°C. Avoid freeze / thaw cycles.

### Background

The protein encoded by this gene is a secreted enzyme that catalyzes the degradation of platelet-activating factor to biologically inactive products. Defects in this gene are a cause of platelet-activating factor acetylhydrolase deficiency. Two transcript variants encoding the same protein have been found for this gene.

### For Research Use Only