

CD34 Polyclonal Antibody

Catalog No. E-AB-64867

Note: Centrifuge before opening to ensure complete recovery of vial contents.

Description

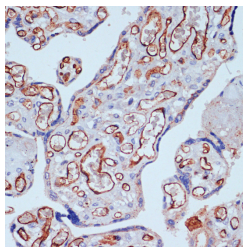
Reactivity	Human,Mouse,Rat
Immunogen	A synthetic peptide of human CD34 (NP_001020280.1).
Host	Rabbit
Isotype	IgG
Purification	Affinity purification
Conjugation	Unconjugated
Buffer	PBS with 0.02% sodium azide, 50% glycerol, pH7.3.

Applications

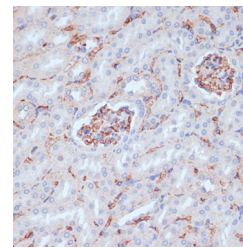
Recommended Dilution

**IHC 1:50-1:200 IF
1:50-1:200**

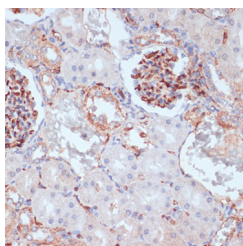
Data



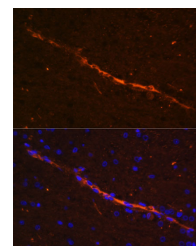
Immunohistochemistry of paraffin-embedded Human placenta using CD34 Polyclonal Antibody at dilution of 1:100 (40x lens).



Immunohistochemistry of paraffin-embedded Mouse kidney using CD34 Polyclonal Antibody at dilution of 1:100 (40x lens).

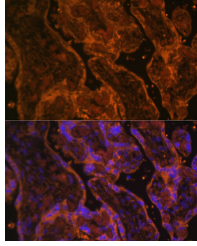


Immunohistochemistry of paraffin-embedded Rat kidney using CD34 Polyclonal Antibody at dilution of 1:100 (40x lens).



Immunofluorescence analysis of Rat brain using CD34 Polyclonal Antibody at dilution of 1:100. Blue: DAPI for nuclear staining.

For Research Use Only



Immunofluorescence analysis of Human placenta
using CD34 Polyclonal Antibody at dilution of 1:100.
Blue: DAPI for nuclear staining.

Preparation & Storage

Storage Store at -20°C. Avoid freeze / thaw cycles.

Background

The protein encoded by this gene may play a role in the attachment of stem cells to the bone marrow extracellular matrix or to stromal cells. This single-pass membrane protein is highly glycosylated and phosphorylated by protein kinase C. Two transcript variants encoding different isoforms have been found for this gene.