

## MESDC2 Polyclonal Antibody

**Catalog No.** E-AB-64868

**Note:** Centrifuge before opening to ensure complete recovery of vial contents.

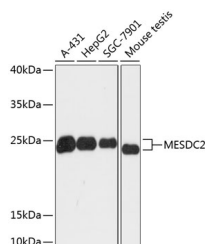
### Description

<b>Reactivity</b>	Human, Mouse
<b>Immunogen</b>	Recombinant fusion protein of human MESDC2 (NP_055969.1).
<b>Host</b>	Rabbit
<b>Isotype</b>	IgG
<b>Purification</b>	Affinity purification
<b>Conjugation</b>	Unconjugated
<b>Buffer</b>	PBS with 0.02% sodium azide, 50% glycerol, pH7.3.

### Applications Recommended Dilution

**WB** 1:500-1:2000

### Data



Western blot analysis of extracts of various cell lines using MESDC2 Polyclonal Antibody at dilution of 1:3000.

**Observed Mw:26kDa**  
**Calculated Mw:26kDa**

### Preparation & Storage

**Storage** Store at -20°C. Avoid freeze / thaw cycles.

### Background

MESD (Mesoderm Development LRP Chaperone) is a Protein Coding gene. Diseases associated with MESD include Osteogenesis Imperfecta, Type Xx and Epilepsy, Nocturnal Frontal Lobe, 2. Among its related pathways are Wnt / Hedgehog / Notch.

### For Research Use Only