

MESDC2 Polyclonal Antibody

Catalog Number:E-AB-64868



Note: Centrifuge before opening to ensure complete recovery of vial contents.

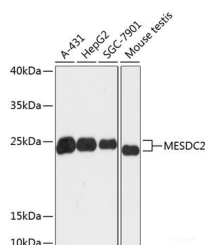
Description

Reactivity	Human,Mouse
Immunogen	Recombinant fusion protein of human MESDC2 (NP_055969.1).
Host	Rabbit
Isotype	IgG
Purification	Affinity purification
Conjugation	Unconjugated
Formulation	PBS with 0.02% sodium azide, 50% glycerol, pH7.3.

Applications Recommended Dilution

WB	1:500-1:2000
-----------	--------------

Data



Western blot analysis of extracts of various cell lines using MESDC2 Polyclonal Antibody at dilution of 1:3000.

Observed Mw:26kDa
Calculated Mw:26kDa

Preparation & Storage

Storage Store at -20°C. Avoid freeze / thaw cycles.

Background

MESD (Mesoderm Development LRP Chaperone) is a Protein Coding gene. Diseases associated with MESD include Osteogenesis Imperfecta, Type Xx and Epilepsy, Nocturnal Frontal Lobe, 2. Among its related pathways are Wnt / Hedgehog / Notch.

For Research Use Only

A Reliable Research Partner in Life Science and Medicine

Toll-free: 1-888-852-8623

Web: www.elabscience.com

Tel: 1-832-243-6086

Email: techsupport@elabscience.com

Fax: 1-832-243-6017