

RPA3 Polyclonal Antibody

Catalog No. E-AB-64914

Note: Centrifuge before opening to ensure complete recovery of vial contents.

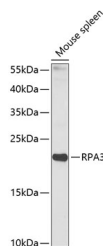
Description

Reactivity	Human,Mouse,Rat
Immunogen	Recombinant fusion protein of human RPA3 (NP_002938.1).
Host	Rabbit
Isotype	IgG
Purification	Affinity purification
Conjugation	Unconjugated
Buffer	PBS with 0.02% sodium azide, 50% glycerol, pH7.3.

Applications Recommended Dilution

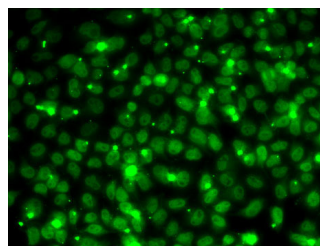
WB	1:500-1:2000
IF	1:50-1:200

Data



Western blot analysis of extracts of Mouse spleen using RPA3 Polyclonal Antibody at dilution of 1:1000.

Observed Mw:19kDa
Calculated Mw:13kDa



Immunofluorescence analysis of MCF7 cells using RPA3 Polyclonal Antibody

Preparation & Storage

Storage Store at -20°C. Avoid freeze / thaw cycles.

Background

RPA3 (Replication Protein A3) is a Protein Coding gene. Diseases associated with RPA3 include Xeroderma Pigmentosum, Variant Type. Among its related pathways are Regulation of activated PAK-2p34 by proteasome mediated degradation and Homologous DNA Pairing and Strand Exchange. Gene Ontology (GO) annotations related to this gene include single-stranded DNA binding and damaged DNA binding.

For Research Use Only