

## IGF2BP2 Polyclonal Antibody

Catalog No. E-AB-64927

**Note:** Centrifuge before opening to ensure complete recovery of vial contents.

### Description

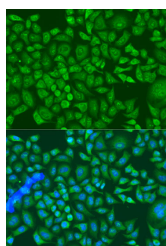
|                     |   |
|---------------------|---|
| <b>Reactivity</b>   | Human,Mouse,Rat                                     |
| <b>Immunogen</b>    | A synthetic peptide of human IGF2BP2 (NP_006539.3). |
| <b>Host</b>         | Rabbit  |
| <b>Isotype</b>      | IgG   |
| <b>Purification</b> | Affinity purification                               |
| <b>Conjugation</b>  | Unconjugated  |
| <b>Buffer</b>       | PBS with 0.02% sodium azide, 50% glycerol, pH7.3.   |

### Applications

### Recommended Dilution

**IF** 1:50-1:200

### Data



Immunofluorescence analysis of U2OS cells using IGF2BP2 Polyclonal Antibody at dilution of 1:100.  
Blue: DAPI for nuclear staining.

### Preparation & Storage

**Storage** Store at -20°C. Avoid freeze / thaw cycles.

### Background

This gene encodes a member of the IGF-II mRNA-binding protein (IMP) family. The protein encoded by this gene contains four KH domains and two RRM domains. It functions by binding to the 5' UTR of the insulin-like growth factor 2 (IGF2) mRNA and regulating IGF2 translation. Alternative promoter usage and alternate splicing result in multiple variants encoding different isoforms.

### For Research Use Only