

## TGFBR2 Polyclonal Antibody

Catalog No. E-AB-60307

**Note:** Centrifuge before opening to ensure complete recovery of vial contents.

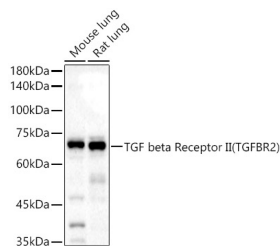
### Description

<b>Reactivity</b>	Human,Mouse,Rat
<b>Immunogen</b>	Recombinant fusion protein of human TGFBR2
<b>Host</b>	Rabbit
<b>Isotype</b>	IgG
<b>Purification</b>	Affinity purification
<b>Conjugation</b>	Unconjugated
<b>Buffer</b>	PBS with 0.05% proclin300,50% glycerol,pH7.3.

### Applications Recommended Dilution

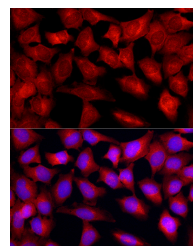
<b>WB</b>	1:500-1:2000
<b>IF</b>	1:50-1:200

### Data

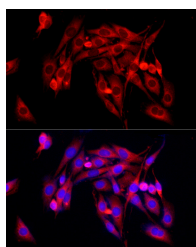


Western blot analysis of extracts of various cell lines using TGF beta Receptor II (TGFBR2) Polyclonal Antibody at 1:500 dilution.

**Observed Mw:70KDa**  
**Calculated Mw:64kDa/67kDa**



Immunofluorescence analysis of HeLa cells using TGF beta Receptor II (TGFBR2) Polyclonal Antibody at dilution of 1:250 (40x lens). Blue: DAPI for nuclear staining.



Immunofluorescence analysis of PC-12 cells using TGF beta Receptor II (TGFBR2) Polyclonal antibody at dilution of 1:250 (40x lens). Blue: DAPI for nuclear staining.

### Preparation & Storage

#### For Research Use Only

**Storage** Store at -20°C. Avoid freeze / thaw cycles.

## Background

This gene encodes a member of the Ser/Thr protein kinase family and the TGF $\beta$  receptor subfamily. The encoded protein is a transmembrane protein that has a protein kinase domain, forms a heterodimeric complex with another receptor protein, and binds TGF- $\beta$ . This receptor/ligand complex phosphorylates proteins, which then enter the nucleus and regulate the transcription of a subset of genes related to cell proliferation. Mutations in this gene have been associated with Marfan Syndrome, Loeys-Deitz Aortic Aneurysm Syndrome, and the development of various types of tumors. Alternatively spliced transcript variants encoding different isoforms have been characterized.