

KIRREL Polyclonal Antibody

Catalog No. E-AB-64971

Note: Centrifuge before opening to ensure complete recovery of vial contents.

Description

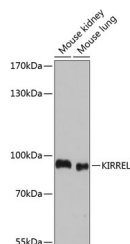
Reactivity	Mouse,Rat
Immunogen	Recombinant fusion protein of human KIRREL (NP_060710.3).
Host	Rabbit
Isotype	IgG
Purification	Affinity purification
Conjugation	Unconjugated
Buffer	PBS with 0.02% sodium azide, 50% glycerol, pH7.3.

Applications

Recommended Dilution

WB 1:500-1:2000

Data



Western blot analysis of extracts of various cell lines using KIRREL Polyclonal Antibody at dilution of 1:1000.

Observed Mw:83kDa

Calculated Mw:72kDa/83kDa/85kDa

Preparation & Storage

Storage Store at -20°C. Avoid freeze / thaw cycles.

Background

NEPH1 is a member of the nephrin-like protein family, which includes NEPH2 (MIM 607761) and NEPH3 (MIM 607762). The cytoplasmic domains of these proteins interact with the C terminus of podocin, and the genes are expressed in kidney podocytes, cells involved in ensuring size- and charge-selective ultrafiltration.

For Research Use Only