

# NDUFAF2 Polyclonal Antibody

Catalog Number:E-AB-64974



**Note:** Centrifuge before opening to ensure complete recovery of vial contents.

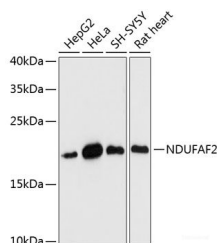
## Description

|                     |  |
|---------------------|--|
| <b>Reactivity</b>   | Human,Mouse,Rat  |
| <b>Immunogen</b>    | Recombinant fusion protein of human NDUFAF2 (NP_777549.1). |
| <b>Host</b>         | Rabbit   |
| <b>Isotype</b>      | IgG  |
| <b>Purification</b> | Affinity purification                                      |
| <b>Conjugation</b>  | Unconjugated   |
| <b>Formulation</b>  | PBS with 0.02% sodium azide, 50% glycerol, pH7.3.          |

## Applications Recommended Dilution

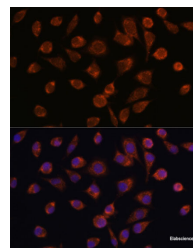
|           |              |
|-----------|--------------|
| <b>WB</b> | 1:500-1:2000 |
| <b>IF</b> | 1:50-1:200   |

## Data



Western blot analysis of extracts of various cell lines using NDUFAF2 Polyclonal Antibody at dilution of 1:3000.

**Observed Mw:20kDa**  
**Calculated Mw:19kDa**



Immunofluorescence analysis of L929 cells using NDUFAF2 Polyclonal Antibody at dilution of 1:100.  
Blue: DAPI for nuclear staining.

## Preparation & Storage

**Storage** Store at -20°C. Avoid freeze / thaw cycles.

## Background

NADH:ubiquinone oxidoreductase (complex I) catalyzes the transfer of electrons from NADH to ubiquinone (coenzyme Q) in the first step of the mitochondrial respiratory chain, resulting in the translocation of protons across the inner mitochondrial membrane. This gene encodes a complex I assembly factor. Mutations in this gene cause progressive encephalopathy resulting from mitochondrial complex I deficiency.

## For Research Use Only

A Reliable Research Partner in Life Science and Medicine

Toll-free: 1-888-852-8623

Web: [www.elabscience.com](http://www.elabscience.com)

Tel: 1-832-243-6086

Email: [techsupport@elabscience.com](mailto:techsupport@elabscience.com)

Fax: 1-832-243-6017