

Catalog Number:E-AB-64998



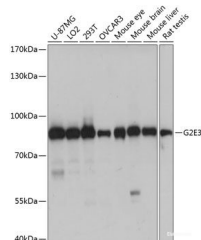
Description

| | |
|---------------------|---|
| Reactivity | Human,Mouse,Rat |
| Immunogen | Recombinant fusion protein of human G2E3 (NP_060239.2). |
| Host | Rabbit |
| Isotype | IgG |
| Purification | Affinity purification |
| Conjugation | Unconjugated |
| Formulation | PBS with 0.02% sodium azide, 50% glycerol, pH7.3. |

| Applications | Recommended Dilution |
|--------------|----------------------|
|--------------|----------------------|

WB 1:500-1:2000

Data



Western blot analysis of extracts of various cell lines using G2E3 Polyclonal Antibody at dilution of 1:1000.

Observed Mw:80kDa
Calculated Mw:80kDa

Preparation & Storage

| | |
|----------------|---|
| Storage | Store at -20°C. Avoid freeze / thaw cycles. |
|----------------|---|

Background

G2E3 (G2/M-Phase Specific E3 Ubiquitin Protein Ligase) is a Protein Coding gene. Gene Ontology (GO) annotations related to this gene include ligase activity and ubiquitin-protein transferase activity. An important paralog of this gene is PHF7.

For Research Use Only

A Reliable Research Partner in Life Science and Medicine

Toll-free: 1-888-852-8623

Web: www.elabscience.com

Tel: 1-832-243-6086

Email: techsupport@elabscience.com

Fax: 1-832-243-6017