

PSD2 Polyclonal Antibody

Catalog No. E-AB-65003

Note: Centrifuge before opening to ensure complete recovery of vial contents.

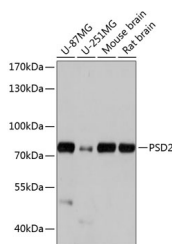
Description

Reactivity	Human, Mouse, Rat
Immunogen	Recombinant fusion protein of human PSD2 (NP_115665.1).
Host	Rabbit
Isotype	IgG
Purification	Affinity purification
Conjugation	Unconjugated
Buffer	PBS with 0.02% sodium azide, 50% glycerol, pH7.3.

Applications Recommended Dilution

WB 1:500-1:2000

Data



Western blot analysis of extracts of various cell lines using PSD2 Polyclonal Antibody at dilution of 1:1000.

Observed Mw:85kDa
Calculated Mw:84kDa

Preparation & Storage

Storage Store at -20°C. Avoid freeze / thaw cycles.

Background

PSD2 (Pleckstrin And Sec7 Domain Containing 2) is a Protein Coding gene. Diseases associated with PSD2 include Cone-Rod Dystrophy 1 and Gerstmann Syndrome. Among its related pathways are Endocytosis. Gene Ontology (GO) annotations related to this gene include phospholipid binding and ARF guanyl-nucleotide exchange factor activity. An important paralog of this gene is PSD.

For Research Use Only