

CALM3 Polyclonal Antibody

Catalog Number:E-AB-65026



Note: Centrifuge before opening to ensure complete recovery of vial contents.

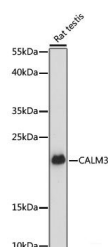
Description

Reactivity	Human,Mouse,Rat
Immunogen	A synthetic peptide of human CALM3 (NP_005175.2).
Host	Rabbit
Isotype	IgG
Purification	Affinity purification
Conjugation	Unconjugated
Formulation	PBS with 0.02% sodium azide, 50% glycerol, pH7.3.

Applications Recommended Dilution

WB	1:500-1:2000
-----------	--------------

Data



Western blot analysis of extracts of Rat testis using CALM3 Polyclonal Antibody at dilution of 1:3000.

Observed Mw:17kDa
Calculated Mw:16kDa

Preparation & Storage

Storage Store at -20°C. Avoid freeze / thaw cycles.

Background

CALM3 (Calmodulin 3) is a Protein Coding gene. Diseases associated with CALM3 include Long Qt Syndrome 16 and Long Qt Syndrome 1. Among its related pathways are DAG and IP3 signaling and Transport of glucose and other sugars, bile salts and organic acids, metal ions and amine compounds. Gene Ontology (GO) annotations related to this gene include calcium ion binding and protein domain specific binding. An important paralog of this gene is CALM2.

For Research Use Only

A Reliable Research Partner in Life Science and Medicine

Toll-free: 1-888-852-8623

Web: www.elabscience.com

Tel: 1-832-243-6086

Email: techsupport@elabscience.com

Fax: 1-832-243-6017