

MYH13 Polyclonal Antibody

Catalog Number:E-AB-65053

Note: Centrifuge before opening to ensure complete recovery of vial contents.

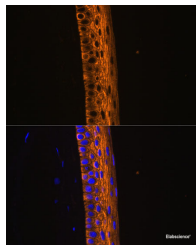
Description

Reactivity	Mouse,Rat
Immunogen	Recombinant fusion protein of human MYH13 (NP_003793.2).
Host	Rabbit
Isotype	IgG
Purification	Affinity purification
Conjugation	Unconjugated
Formulation	PBS with 0.02% sodium azide, 50% glycerol, pH7.3.

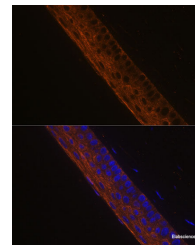
Applications Recommended Dilution

IF	1:50-1:100
-----------	------------

Data



Immunofluorescence analysis of Rat eye using MYH13 Polyclonal Antibody at dilution of 1:100 (40x lens). Blue: DAPI for nuclear staining.



Immunofluorescence analysis of Mouse eye using MYH13 Polyclonal Antibody at dilution of 1:100 (40x lens). Blue: DAPI for nuclear staining.

Preparation & Storage

Storage Store at -20°C. Avoid freeze / thaw cycles.

Background

MYH13 (Myosin Heavy Chain 13) is a Protein Coding gene. Diseases associated with MYH13 include Ventricular Tachycardia, Catecholaminergic Polymorphic, 1, With Or Without Atrial Dysfunction And/Or Dilated Cardiomyopathy. Among its related pathways are Actin Nucleation by ARP-WASP Complex and Cytoskeleton remodeling Regulation of actin cytoskeleton by Rho GTPases. Gene Ontology (GO) annotations related to this gene include actin binding and motor activity. An important paralog of this gene is MYH2.

For Research Use Only

A Reliable Research Partner in Life Science and Medicine

Toll-free: 1-888-852-8623

Web: www.elabscience.com

Tel: 1-832-243-6086

Email: techsupport@elabscience.com

Fax: 1-832-243-6017