

SLC16A4 Polyclonal Antibody

Catalog No. E-AB-65120

Note: Centrifuge before opening to ensure complete recovery of vial contents.

Description

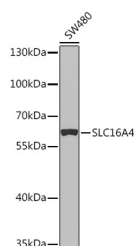
Reactivity	Human,Rat
Immunogen	A synthetic peptide of human SLC16A4
Host	Rabbit
Isotype	IgG
Purification	Affinity purification
Conjugation	Unconjugated
Buffer	PBS with 0.02% sodium azide,50% glycerol,pH7.3.

Applications

Recommended Dilution

WB 1:500-1:2000

Data



Western blot analysis of extracts of SW480 cells using SLC16A4 Polyclonal Antibody at 1:1000 dilution.

Observed Mw:60kDa

Calculated Mw:35kDa/42kDa/46kDa/49kDa/54kDa

Preparation & Storage

Storage Store at -20°C. Avoid freeze / thaw cycles.

Background

Proton-linked monocarboxylate transporter. Catalyzes the rapid transport across the plasma membrane of many monocarboxylates such as lactate, pyruvate, branched-chain oxo acids derived from leucine, valine and isoleucine, and the ketone bodies acetoacetate, beta-hydroxybutyrate and acetate (By similarity).

For Research Use Only