

## SWAP70 Polyclonal Antibody

**Catalog No.** E-AB-65133

*Note:* Centrifuge before opening to ensure complete recovery of vial contents.

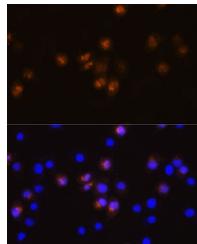
### Description

<b>Reactivity</b>	Human,Mouse,Rat
<b>Immunogen</b>	Recombinant fusion protein of human SWAP70 (NP_055870.2).
<b>Host</b>	Rabbit
<b>Isotype</b>	IgG
<b>Purification</b>	Affinity purification
<b>Conjugation</b>	Unconjugated
<b>Buffer</b>	PBS with 0.02% sodium azide, 50% glycerol, pH7.3.

### Applications Recommended Dilution

**IF** 1:50-1:200

### Data



Immunofluorescence analysis of L929 cells using SWAP70 Polyclonal Antibody at dilution of 1:100.  
Blue: DAPI for nuclear staining.

### Preparation & Storage

**Storage** Store at -20°C. Avoid freeze / thaw cycles.

### Background

SWAP70 (Switching B Cell Complex Subunit SWAP70) is a Protein Coding gene. Diseases associated with SWAP70 include Nephronophthisis 3. Among its related pathways are NF-kappaB Signaling. Gene Ontology (GO) annotations related to this gene include calcium ion binding. An important paralog of this gene is DEF6.

### For Research Use Only