

NDUFC2 Polyclonal Antibody

Catalog No. E-AB-65188

Note: Centrifuge before opening to ensure complete recovery of vial contents.

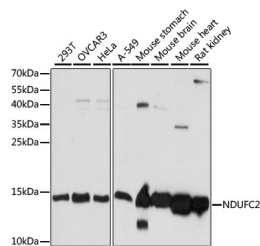
Description

Reactivity	Human, Mouse, Rat
Immunogen	A synthetic peptide of human NDUFC2
Host	Rabbit
Isotype	IgG
Purification	Affinity purification
Conjugation	Unconjugated
Buffer	PBS with 0.02% sodium azide and 50% glycerol pH 7.4.

Applications Recommended Dilution

WB 1:500 - 1:2000

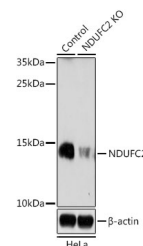
Data



Western blot analysis of extracts of various cell lines with NDUFC2 Polyclonal Antibody

Observed Mw: 14kDa

Calculated Mw: 10kDa/11kDa/13kDa/14kDa



Western blot analysis of extracts from normal (control) and NDUFC2 knockout (KO) HeLa cells, using NDUFC2 Polyclonal Antibody at dilution of 1:1000.

Preparation & Storage

Storage Store at -20°C. Avoid freeze / thaw cycles.

For Research Use Only