

CLDN17 Polyclonal Antibody

Catalog No. E-AB-65219

Note: Centrifuge before opening to ensure complete recovery of vial contents.

Description

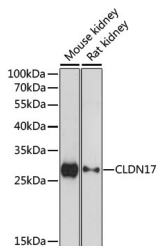
Reactivity	Mouse,Rat
Immunogen	A synthetic peptide of human CLDN17 (NP_036263.1).
Host	Rabbit
Isotype	IgG
Purification	Affinity purification
Conjugation	Unconjugated
Buffer	PBS with 0.02% sodium azide, 50% glycerol, pH7.3.

Applications

Recommended Dilution

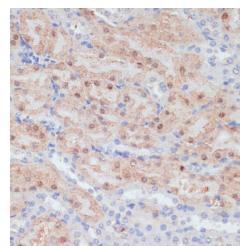
WB	1:500-1:2000
IHC	1:50-1:100

Data



Western blot analysis of extracts of various cell lines using CLDN17 Polyclonal Antibody at dilution of 1:1000.

Observed Mw:29kDa
Calculated Mw:24kDa



Immunohistochemistry of paraffin-embedded Mouse kidney using CLDN17 Polyclonal Antibody at dilution of 1:100 (40x lens).

Preparation & Storage

Storage Store at -20°C. Avoid freeze / thaw cycles.

Background

This gene encodes a member of the claudin family. Claudins are integral membrane proteins and components of tight junction strands. Tight junction strands serve as a physical barrier to prevent solutes and water from passing freely through the paracellular space between epithelial or endothelial cell sheets, and also play critical roles in maintaining cell polarity and signal transductions. This gene is intronless and is clustered with CLDN8 on chromosome 21q22.11.

For Research Use Only