

IGF2BP1 Polyclonal Antibody

Catalog No. E-AB-60322

Note: Centrifuge before opening to ensure complete recovery of vial contents.

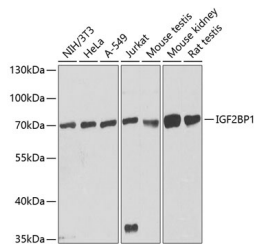
Description

Reactivity	Human, Mouse, Rat
Immunogen	A synthetic peptide of human IGF2BP1 (NP_006537.3).
Host	Rabbit
Isotype	IgG
Purification	Affinity purification
Conjugation	Unconjugated
Buffer	PBS with 0.02% sodium azide, 50% glycerol, pH7.3.

Applications Recommended Dilution

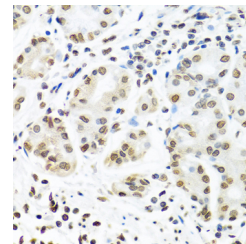
WB	1:500-1:2000
IHC	1:50-1:100
IF	1:50-1:200

Data

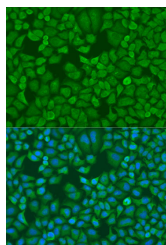


Western blot analysis of extracts of various cell lines using IGF2BP1 Polyclonal Antibody at dilution of 1:1000.

Observed Mw:71kDa
Calculated Mw:48kDa/63kDa



Immunohistochemistry of paraffin-embedded Human stomach using IGF2BP1 Polyclonal Antibody at dilution of 1:100 (40x lens).



Immunofluorescence analysis of U2OS cells using IGF2BP1 Polyclonal Antibody at dilution of 1:100.
Blue: DAPI for nuclear staining.

For Research Use Only

Preparation & Storage

Storage Store at -20°C. Avoid freeze / thaw cycles.

Background

This gene encodes a member of the insulin-like growth factor 2 mRNA-binding protein family. The protein encoded by this gene contains four K homology domains and two RNA recognition motifs. It functions by binding to the mRNAs of certain genes, including insulin-like growth factor 2, beta-actin and beta-transducin repeat-containing protein, and regulating their translation. Two transcript variants encoding different isoforms have been found for this gene.

For Research Use Only