

CTNNA2 Polyclonal Antibody

Catalog Number:E-AB-65239



Note: Centrifuge before opening to ensure complete recovery of vial contents.

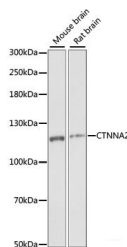
Description

Reactivity	Mouse,Rat
Immunogen	Recombinant fusion protein of human CTNNA2 (NP_004380.2).
Host	Rabbit
Isotype	IgG
Purification	Affinity purification
Conjugation	Unconjugated
Formulation	PBS with 0.02% sodium azide, 50% glycerol, pH7.3.

Applications Recommended Dilution

WB	1:200-1:2000
IHC	1:50-1:200

Data

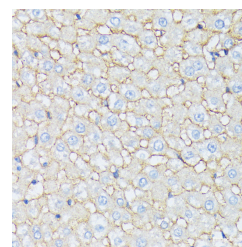


Western blot analysis of extracts of various cell lines using CTNNA2 Polyclonal Antibody at dilution of 1:1000.

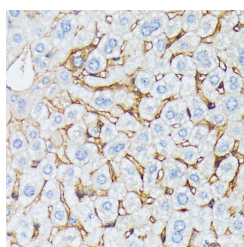
Observed Mw:120kDa
Calculated

Mw:59kDa/65kDa/95kDa/100kDa/104kDa/105kD

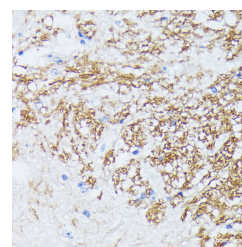
a



Immunohistochemistry of paraffin-embedded Rat liver using CTNNA2 Polyclonal Antibody at dilution of 1:100 (40x lens).



Immunohistochemistry of paraffin-embedded Mouse liver using CTNNA2 Polyclonal Antibody at dilution of 1:100 (40x lens).



Immunohistochemistry of paraffin-embedded Mouse spinal cord using CTNNA2 Polyclonal Antibody at dilution of 1:100 (40x lens).

Preparation & Storage

Storage Store at -20°C. Avoid freeze / thaw cycles.

Background

For Research Use Only

A Reliable Research Partner in Life Science and Medicine

Toll-free: 1-888-852-8623

Web: www.elabscience.com

Tel: 1-832-243-6086

Email: techsupport@elabscience.com

Fax: 1-832-243-6017

CTNNA2 Polyclonal Antibody

Catalog Number: E-AB-65239



CTNNA2 (Catenin Alpha 2) is a Protein Coding gene. Diseases associated with CTNNA2 include Cortical Dysplasia, Complex, With Other Brain Malformations 9 and Arrhythmogenic Right Ventricular Cardiomyopathy. Among its related pathways are Blood-Brain Barrier and Immune Cell Transmigration: VCAM-1/CD106 Signaling and Gastric cancer. Gene Ontology (GO) annotations related to this gene include structural molecule activity and structural constituent of cytoskeleton. An important paralog of this gene is CTNNA1.

For Research Use Only

A Reliable Research Partner in Life Science and Medicine

Toll-free: 1-888-852-8623

Web: www.elabscience.com

Tel: 1-832-243-6086

Email: techsupport@elabscience.com

Fax: 1-832-243-6017