

GTF2E1 Polyclonal Antibody

Catalog No. E-AB-65243

Note: Centrifuge before opening to ensure complete recovery of vial contents.

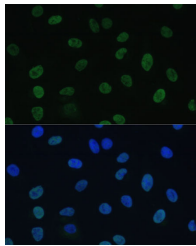
Description

Reactivity	Human,Mouse,Rat
Immunogen	Recombinant fusion protein of human GTF2E1 (NP_005504.2).
Host	Rabbit
Isotype	IgG
Purification	Affinity purification
Conjugation	Unconjugated
Buffer	PBS with 0.02% sodium azide, 50% glycerol, pH7.3.

Applications Recommended Dilution

IF	1:50-1:200
-----------	------------

Data



Immunofluorescence analysis of U-2 OS cells using GTF2E1 Polyclonal Antibody at dilution of 1:100 (40x lens). Blue: DAPI for nuclear staining.

Preparation & Storage

Storage Store at -20°C. Avoid freeze / thaw cycles.

Background

GTF2E1 (General Transcription Factor IIE Subunit 1) is a Protein Coding gene. Among its related pathways are RNA Polymerase II Transcription Initiation And Promoter Clearance and Apoptotic Pathways in Synovial Fibroblasts. Gene Ontology (GO) annotations related to this gene include sequence-specific DNA binding.

For Research Use Only