

PSMG1 Polyclonal Antibody

Catalog No. E-AB-65271

Note: Centrifuge before opening to ensure complete recovery of vial contents.

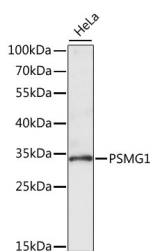
Description

Reactivity	Human, Mouse, Rat
Immunogen	Recombinant fusion protein of human PSMG1 (NP_003711.1).
Host	Rabbit
Isotype	IgG
Purification	Affinity purification
Conjugation	Unconjugated
Buffer	PBS with 0.02% sodium azide, 50% glycerol, pH7.3.

Applications Recommended Dilution

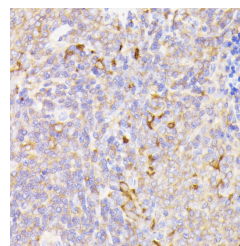
WB 1:200-1:2000 IHC
1:50-1:200

Data

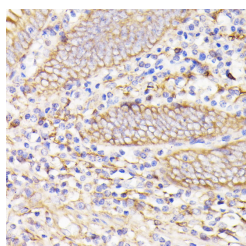


Western blot analysis of extracts of HeLa cells using PSMG1 Polyclonal Antibody at dilution of 1:1000.

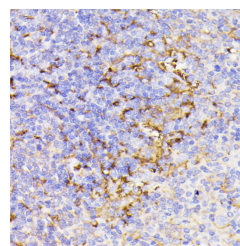
Observed Mw:33kDa
Calculated Mw:30kDa/32kDa



Immunohistochemistry of paraffin-embedded Rat spleen using PSMG1 Polyclonal Antibody at dilution of 1:100 (40x lens).



Immunohistochemistry of paraffin-embedded Human appendix using PSMG1 Polyclonal Antibody at dilution of 1:100 (40x lens).



Immunohistochemistry of paraffin-embedded Mouse spleen using PSMG1 Polyclonal Antibody at dilution of 1:100 (40x lens).

Preparation & Storage

Storage Store at -20°C. Avoid freeze / thaw cycles.

For Research Use Only

Background

PSMG1 (Proteasome Assembly Chaperone 1) is a Protein Coding gene. Diseases associated with PSMG1 include Down Syndrome and Thrombasthenia. Gene Ontology (GO) annotations related to this gene include proteasome binding.