

ESYT1 Polyclonal Antibody

Catalog Number:E-AB-65305

Note: Centrifuge before opening to ensure complete recovery of vial contents.

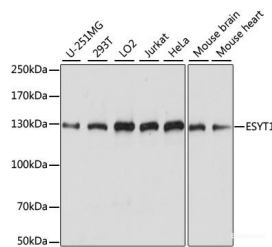
Description

Reactivity	Human,Mouse,Rat
Immunogen	Recombinant fusion protein of human ESYT1 (NP_056107.1).
Host	Rabbit
Isotype	IgG
Purification	Affinity purification
Conjugation	Unconjugated
Formulation	PBS with 0.02% sodium azide, 50% glycerol, pH7.3.

Applications Recommended Dilution

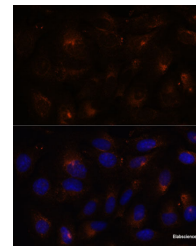
WB	1:200-1:2000
IF	1:50-1:200

Data



Western blot analysis of extracts of various cell lines using ESYT1 Polyclonal Antibody at dilution of 1:1000.

Observed Mw:123kDa
Calculated Mw:122kDa/124kDa



Immunofluorescence analysis of U-2 OS cells using ESYT1 Polyclonal Antibody at dilution of 1:100. Blue: DAPI for nuclear staining.

Preparation & Storage

Storage Store at -20°C. Avoid freeze / thaw cycles.

Background

ESYT1 (Extended Synaptotagmin 1) is a Protein Coding gene. Diseases associated with ESYT1 include Stormorken Syndrome and Myopathy, Tubular Aggregate, 1. Among its related pathways are Sphingolipid metabolism and Metabolism. Gene Ontology (GO) annotations related to this gene include lipid binding and phospholipid binding. An important paralog of this gene is ESYT2.

For Research Use Only

A Reliable Research Partner in Life Science and Medicine

Toll-free: 1-888-852-8623

Web: www.elabscience.com

Tel: 1-832-243-6086

Email: techsupport@elabscience.com

Fax: 1-832-243-6017