

# TIMP2 Polyclonal Antibody

Catalog Number: E-AB-60338

**Note:** Centrifuge before opening to ensure complete recovery of vial contents.

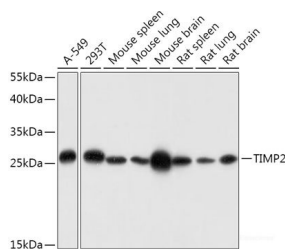
## Description

|                     |   |
|---------------------|---|
| <b>Reactivity</b>   | Human, Mouse, Rat                                 |
| <b>Immunogen</b>    | A synthetic peptide of human TIMP2 (NP_003246.1). |
| <b>Host</b>         | Rabbit  |
| <b>Isotype</b>      | IgG   |
| <b>Purification</b> | Affinity purification                             |
| <b>Conjugation</b>  | Unconjugated                                      |
| <b>Formulation</b>  | PBS with 0.02% sodium azide, 50% glycerol, pH7.3. |

## Applications Recommended Dilution

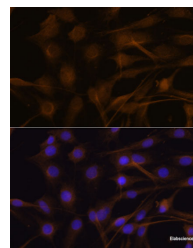
|           |              |
|-----------|--------------|
| <b>WB</b> | 1:500-1:2000 |
| <b>IF</b> | 1:50-1:200   |

## Data

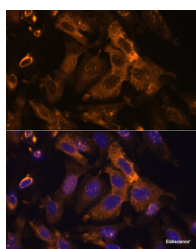


Western blot analysis of extracts of various cell lines using TIMP2 Polyclonal Antibody at dilution of 1:1000.

**Observed Mw: 26kDa**  
**Calculated Mw: 24kDa**



Immunofluorescence analysis of C6 cells using TIMP2 Polyclonal Antibody at dilution of 1:100. Blue: DAPI for nuclear staining.



Immunofluorescence analysis of U-2 OS cells using TIMP2 Polyclonal Antibody at dilution of 1:100. Blue: DAPI for nuclear staining.

## Preparation & Storage

**Storage** Store at -20°C. Avoid freeze / thaw cycles.

## Background

This gene is a member of the TIMP gene family. The proteins encoded by this gene family are natural inhibitors of the matrix metalloproteinases, a group of peptidases involved in degradation of the extracellular matrix. In addition to an

## For Research Use Only

A Reliable Research Partner in Life Science and Medicine

Toll-free: 1-888-852-8623

Web: [www.elabscience.com](http://www.elabscience.com)

Tel: 1-832-243-6086

Email: [techsupport@elabscience.com](mailto:techsupport@elabscience.com)

Fax: 1-832-243-6017

# TIMP2 Polyclonal Antibody

Catalog Number: E-AB-60338



inhibitory role against metalloproteinases, the encoded protein has a unique role among TIMP family members in its ability to directly suppress the proliferation of endothelial cells. As a result, the encoded protein may be critical to the maintenance of tissue homeostasis by suppressing the proliferation of quiescent tissues in response to angiogenic factors, and by inhibiting protease activity in tissues undergoing remodelling of the extracellular matrix.

---

## For Research Use Only

A Reliable Research Partner in Life Science and Medicine

Toll-free: 1-888-852-8623

Tel: 1-832-243-6086

Fax: 1-832-243-6017

Web: [www.elabscience.com](http://www.elabscience.com)

Email: [techsupport@elabscience.com](mailto:techsupport@elabscience.com)