

PAH Polyclonal Antibody

Catalog No. E-AB-60339

Note: Centrifuge before opening to ensure complete recovery of vial contents.

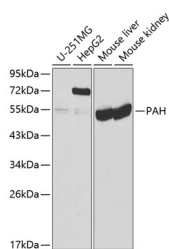
Description

Reactivity	Human, Mouse, Rat
Immunogen	Recombinant fusion protein of human PAH (NP_000268.1).
Host	Rabbit
Isotype	IgG
Purification	Affinity purification
Conjugation	Unconjugated
Buffer	PBS with 0.02% sodium azide, 50% glycerol, pH7.3.

Applications Recommended Dilution

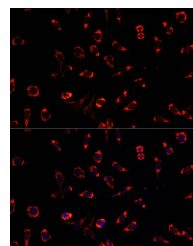
WB 1:500-1:2000 IF
1:50-1:200

Data



Western blot analysis of extracts of various cell lines using PAH Polyclonal Antibody at dilution of 1:1000.

Observed Mw:55kDa
Calculated Mw:51kDa



Immunofluorescence analysis of L929 cells using PAH Polyclonal Antibody at dilution of 1:100. Blue: DAPI for nuclear staining.

Preparation & Storage

Storage Store at -20°C. Avoid freeze / thaw cycles.

Background

PAH encodes the enzyme phenylalanine hydroxylase that is the rate-limiting step in phenylalanine catabolism. Deficiency of this enzyme activity results in the autosomal recessive disorder phenylketonuria.

For Research Use Only