

(KO Validated) HuR / ELAVL1 Polyclonal Antibody

Catalog Number:E-AB-60367



Note: Centrifuge before opening to ensure complete recovery of vial contents.

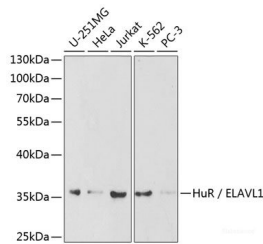
Description

Reactivity	Human,Mouse,Rat
Immunogen	Recombinant fusion protein of human HuR / ELAVL1 (NP_001410.2).
Host	Rabbit
Isotype	IgG
Purification	Affinity purification
Conjugation	Unconjugated
Formulation	PBS with 0.02% sodium azide, 50% glycerol, pH7.3.

Applications Recommended Dilution

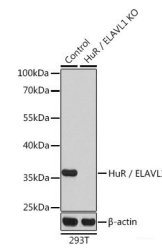
WB	1:500-1:2000
IHC	1:100-1:200
IF	1:50-1:200

Data

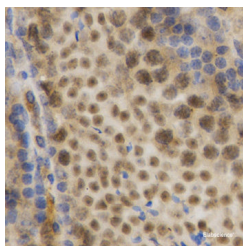


Western blot analysis of extracts of various cell lines using HuR / ELAVL1 Polyclonal Antibody at dilution of 1:1000.

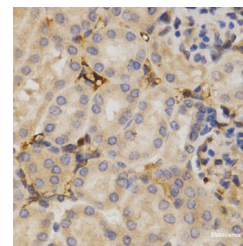
Observed Mw:37kDa
Calculated Mw:36kDa/38kDa



Western blot analysis of extracts from normal (control) and HuR / ELAVL1 knockout (KO) 293T cells using HuR / ELAVL1 Polyclonal Antibody at dilution of 1:1000.



Immunohistochemistry of paraffin-embedded Mouse testis using HuR / ELAVL1 Polyclonal Antibody at dilution of 1:200 (40x lens).



Immunohistochemistry of paraffin-embedded Mouse kidney using HuR / ELAVL1 Polyclonal Antibody at dilution of 1:200 (40x lens).

For Research Use Only

A Reliable Research Partner in Life Science and Medicine

Toll-free: 1-888-852-8623

Web: www.elabscience.com

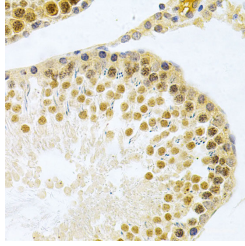
Tel: 1-832-243-6086

Email: techsupport@elabscience.com

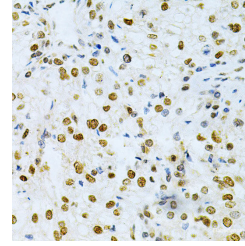
Fax: 1-832-243-6017

(KO Validated) HuR / ELAVL1 Polyclonal Antibody

Catalog Number:E-AB-60367



Immunohistochemistry of paraffin-embedded Rat testis using HuR / ELAVL1 Polyclonal Antibody at dilution of 1:200 (40x lens).



Immunohistochemistry of paraffin-embedded Human kidney cancer using HuR / ELAVL1 Polyclonal Antibody at dilution of 1:200 (40x lens).

Preparation & Storage

Storage Store at -20°C. Avoid freeze / thaw cycles.

Background

The protein encoded by this gene is a member of the ELAVL family of RNA-binding proteins that contain several RNA recognition motifs, and selectively bind AU-rich elements (AREs) found in the 3' untranslated regions of mRNAs. AREs signal degradation of mRNAs as a means to regulate gene expression, thus by binding AREs, the ELAVL family of proteins play a role in stabilizing ARE-containing mRNAs. This gene has been implicated in a variety of biological processes and has been linked to a number of diseases, including cancer. It is highly expressed in many cancers, and could be potentially useful in cancer diagnosis, prognosis, and therapy.

For Research Use Only

A Reliable Research Partner in Life Science and Medicine

Toll-free: 1-888-852-8623

Web: www.elabscience.com

Tel: 1-832-243-6086

Email: techsupport@elabscience.com

Fax: 1-832-243-6017