

## NPPA Polyclonal Antibody

**Catalog No.** E-AB-60368

*Note:* Centrifuge before opening to ensure complete recovery of vial contents.

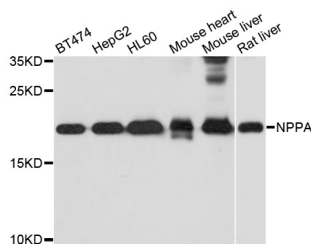
### Description

|                     |  |
|---------------------|--|
| <b>Reactivity</b>   | Human, Mouse   |
| <b>Immunogen</b>    | Recombinant protein of human NPPA                    |
| <b>Host</b>         | Rabbit   |
| <b>Isotype</b>      | IgG  |
| <b>Purification</b> | Affinity purification                                |
| <b>Conjugation</b>  | Unconjugated   |
| <b>Buffer</b>       | PBS with 0.02% sodium azide and 50% glycerol pH 7.4. |

### Applications Recommended Dilution

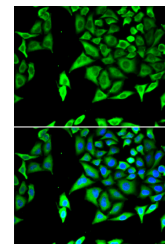
**WB 1:500 - 1:2000 IF**  
**1:10 - 1:100**

### Data



Western blot analysis of extracts of various cell lines, using NPPA antibody.

**Observed Mw: 17kDa**  
**Calculated Mw: 16kDa**



Immunofluorescence analysis of U2OS cells using NPPA antibody.

### Preparation & Storage

**Storage** Store at -20°C. Avoid freeze / thaw cycles.

### Background

The protein encoded by this gene belongs to the natriuretic peptide family. Natriuretic peptides are implicated in the control of extracellular fluid volume and electrolyte homeostasis. This protein is synthesized as a large precursor (containing a signal peptide), which is processed to release a peptide from the N-terminus with similarity to vasoactive peptide, cardiodilatin, and another peptide from the C-terminus with natriuretic-diuretic activity. Mutations in this gene have been associated with atrial fibrillation familial type 6. This gene is located adjacent to another member of the natriuretic family of peptides on chromosome 1.

### For Research Use Only