

DNA pol beta Polyclonal Antibody

Catalog No. E-AB-60407

Note: Centrifuge before opening to ensure complete recovery of vial contents.

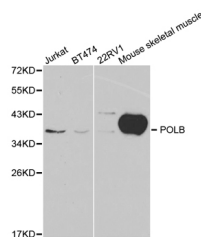
Description

Reactivity	Human, Mouse, Rat
Immunogen	Recombinant protein of human POLB
Host	Rabbit
Isotype	IgG
Purification	Affinity purification
Conjugation	Unconjugated
Buffer	PBS with 0.02% sodium azide and 50% glycerol pH 7.4.

Applications Recommended Dilution

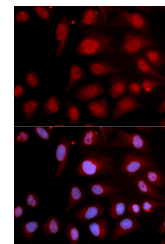
WB 1:200 - 1:1000 IF
1:50 - 1:200

Data

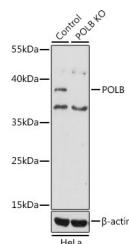


Western blot analysis of extracts of various cell lines with DNA pol beta Polyclonal Antibody

Observed Mw:37kDa
Calculated Mw:38kDa



Immunofluorescence analysis of U2OS cells with DNA pol beta Polyclonal Antibody



Western blot analysis of extracts from normal (control) and DNA pol beta knockout (KO) HeLa cells, using DNA pol beta Polyclonal Antibody at dilution of 1:1000.

Preparation & Storage

Storage Store at -20°C. Avoid freeze / thaw cycles.

For Research Use Only

Background

The protein encoded by this gene is a DNA polymerase involved in base excision and repair, also called gap-filling DNA synthesis. The encoded protein, acting as a monomer, is normally found in the cytoplasm, but it translocates to the nucleus upon DNA damage. Several transcript variants of this gene exist, but the full-length nature of only one has been described to date.