

Vinculin Polyclonal Antibody

Catalog No. E-AB-60433

Note: Centrifuge before opening to ensure complete recovery of vial contents.

Description

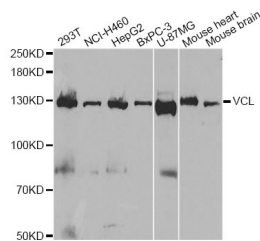
Reactivity	Human,Mouse,Rat
Immunogen	Recombinant protein of human VCL
Host	Rabbit
Isotype	IgG
Purification	Affinity purification
Conjugation	Unconjugated
Buffer	PBS with 0.02% sodium azide and 50% glycerol pH 7.4.

Applications Recommended Dilution

WB 1:500 - 1:2000

IHC 1:50 - 1:200

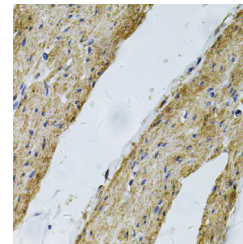
Data



Western blot analysis of extracts of various cell lines with Vinculin Polyclonal Antibody

Observed Mw:124kDa

Calculated Mw:24kDa/116kDa/123kDa



Immunohistochemistry of paraffin-embedded human smooth muscle with Vinculin Polyclonal Antibody

Preparation & Storage

Storage Store at -20°C. Avoid freeze / thaw cycles.

Background

Vinculin is a cytoskeletal protein associated with cell-cell and cell-matrix junctions, where it is thought to function as one of several interacting proteins involved in anchoring F-actin to the membrane. Defects in VCL are the cause of cardiomyopathy dilated type 1W. Dilated cardiomyopathy is a disorder characterized by ventricular dilation and impaired systolic function, resulting in congestive heart failure and arrhythmia. Multiple alternatively spliced transcript variants have been found for this gene, but the biological validity of some variants has not been determined.

For Research Use Only