

CNR2 Polyclonal Antibody

Catalog No. E-AB-65381

Note: Centrifuge before opening to ensure complete recovery of vial contents.

Description

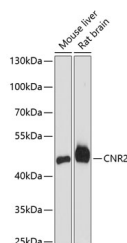
Reactivity	Human, Mouse, Rat
Immunogen	A synthetic peptide of human CNR2 (NP_001832.1).
Host	Rabbit
Isotype	IgG
Purification	Affinity purification
Conjugation	Unconjugated
Buffer	PBS with 0.02% sodium azide, 50% glycerol, pH7.3.

Applications

Recommended Dilution

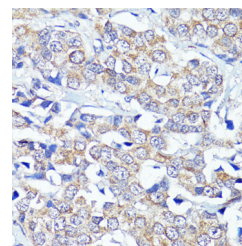
WB 1:500-1:2000 IHC
1:50-1:100

Data

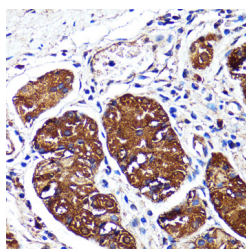


Western blot analysis of extracts of various cell lines using CNR2 Polyclonal Antibody at dilution of 1:3000.

Observed Mw:45kDa
Calculated Mw:39kDa



Immunohistochemistry of paraffin-embedded Human breast cancer using CNR2 Polyclonal Antibody at dilution of 1:150 (40x lens).



Immunohistochemistry of paraffin-embedded Human stomach using CNR2 Polyclonal Antibody at dilution of 1:150 (40x lens).

Preparation & Storage

Storage Store at -20°C. Avoid freeze / thaw cycles.

For Research Use Only

Background

The cannabinoid delta-9-tetrahydrocannabinol is the principal psychoactive ingredient of marijuana. The proteins encoded by this gene and the cannabinoid receptor 1 (brain) (CNR1) gene have the characteristics of a guanine nucleotide-binding protein (G-protein)-coupled receptor for cannabinoids. They inhibit adenylate cyclase activity in a dose-dependent, stereoselective, and pertussis toxin-sensitive manner. These proteins have been found to be involved in the cannabinoid-induced CNS effects (including alterations in mood and cognition) experienced by users of marijuana. The cannabinoid receptors are members of family 1 of the G-protein-coupled receptors.

For Research Use Only