

## XRCC2 Polyclonal Antibody

**Catalog No.** E-AB-60450

*Note:* Centrifuge before opening to ensure complete recovery of vial contents.

### Description

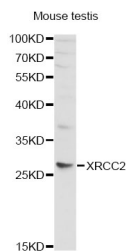
<b>Reactivity</b>	Human,Mouse,Rat
<b>Immunogen</b>	Recombinant protein of human XRCC2
<b>Host</b>	Rabbit
<b>Isotype</b>	IgG
<b>Purification</b>	Affinity purification
<b>Conjugation</b>	Unconjugated
<b>Buffer</b>	PBS with 0.02% sodium azide and 50% glycerol pH 7.4.

### Applications

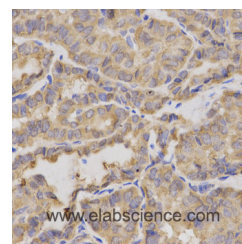
### Recommended Dilution

**WB 1:500 - 1:2000**  
**IHC 1:50 - 1:200 IF**  
**1:50 - 1:200**

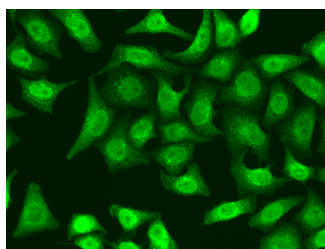
### Data



Western blot analysis of extracts of mouse testis with XRCC2 Polyclonal Antibody  
**Observed Mw:32kDa**  
**Calculated Mw:31kDa**



Immunohistochemistry of paraffin-embedded human thyroid cancer with XRCC2 Polyclonal Antibody



Immunofluorescence analysis of A549 cells with XRCC2 Polyclonal Antibody

### Preparation & Storage

**Storage** Store at -20°C. Avoid freeze / thaw cycles.

### For Research Use Only

## Background

This gene encodes a member of the RecA/Rad51-related protein family that participates in homologous recombination to maintain chromosome stability and repair DNA damage. This gene is involved in the repair of DNA double-strand breaks by homologous recombination and it functionally complements Chinese hamster *irs1*, a repair-deficient mutant that exhibits hypersensitivity to a number of different DNA-damaging agents.