

## PTGDS Polyclonal Antibody

**Catalog No.** E-AB-62883

*Note:* Centrifuge before opening to ensure complete recovery of vial contents.

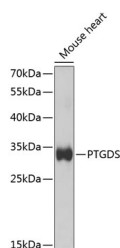
### Description

<b>Reactivity</b>	Human,Mouse,Rat
<b>Immunogen</b>	Recombinant fusion protein of human PTGDS
<b>Host</b>	Rabbit
<b>Isotype</b>	IgG
<b>Purification</b>	Affinity purification
<b>Conjugation</b>	Unconjugated
<b>Buffer</b>	PBS with 0.02% sodium azide,50% glycerol,pH7.3.

### Applications Recommended Dilution

<b>WB</b>	1:500-1:2000
<b>IF</b>	1:50-1:100

### Data



Western blot analysis of extracts of Mouse heart using PTGDS Polyclonal Antibody at 1:500 dilution.

**Observed Mw:28KDa**  
**Calculated Mw:21kDa**

### Preparation & Storage

**Storage** Store at -20°C. Avoid freeze / thaw cycles.

### Background

The protein encoded by this gene is a glutathione-independent prostaglandin D synthase that catalyzes the conversion of prostaglandin H<sub>2</sub> (PGH<sub>2</sub>) to prostaglandin D<sub>2</sub> (PGD<sub>2</sub>). PGD<sub>2</sub> functions as a neuromodulator as well as a trophic factor in the central nervous system. PGD<sub>2</sub> is also involved in smooth muscle contraction/relaxation and is a potent inhibitor of platelet aggregation. This gene is preferentially expressed in brain. Studies with transgenic mice overexpressing this gene suggest that this gene may be also involved in the regulation of non-rapid eye movement sleep.

### For Research Use Only