

## BUB1 Polyclonal Antibody

**Catalog No.** E-AB-60506

*Note:* Centrifuge before opening to ensure complete recovery of vial contents.

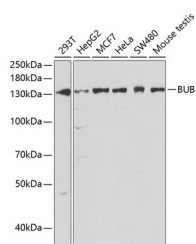
### Description

<b>Reactivity</b>	Human, Mouse, Rat
<b>Immunogen</b>	Recombinant fusion protein of human BUB1 (NP_004327.1).
<b>Host</b>	Rabbit
<b>Isotype</b>	IgG
<b>Purification</b>	Affinity purification
<b>Conjugation</b>	Unconjugated
<b>Buffer</b>	PBS with 0.02% sodium azide, 50% glycerol, pH7.3.

### Applications Recommended Dilution

**WB 1:500-1:2000 IHC**  
**1:50-1:200**

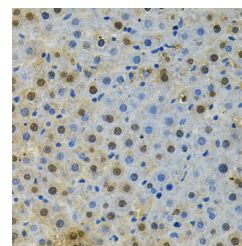
### Data



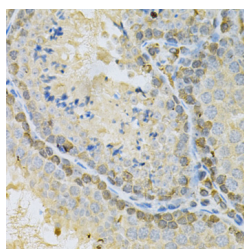
Western blot analysis of extracts of various cell lines using BUB1 Polyclonal Antibody at dilution of 1:1000.

**Observed Mw:133kDa**

**Calculated Mw:115kDa/120kDa/122kDa**



Immunohistochemistry of paraffin-embedded Rat liver using BUB1 Polyclonal Antibody at dilution of 1:200 (40x lens).



Immunohistochemistry of paraffin-embedded Mouse testis using BUB1 Polyclonal Antibody at dilution of 1:200 (40x lens).

### Preparation & Storage

**Storage** Store at -20°C. Avoid freeze / thaw cycles.

### For Research Use Only

## Background

This gene encodes a serine/threonine-protein kinase that play a central role in mitosis. The encoded protein functions in part by phosphorylating members of the mitotic checkpoint complex and activating the spindle checkpoint. This protein also plays a role in inhibiting the activation of the anaphase promoting complex/cyclosome. This protein may also function in the DNA damage response. Mutations in this gene have been associated with aneuploidy and several forms of cancer. Alternate splicing results in multiple transcript variants.