

(KO Validated) RAB27A Polyclonal Antibody

Catalog No. E-AB-60509

Note: Centrifuge before opening to ensure complete recovery of vial contents.

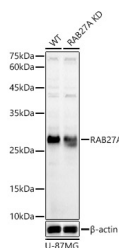
Description

Reactivity	Human, Mouse
Immunogen	Recombinant fusion protein of human RAB27A
Host	Rabbit
Isotype	IgG
Purification	Affinity purification
Conjugation	Unconjugated
Buffer	PBS with 0.02% sodium azide, 50% glycerol, pH7.3.

Applications Recommended Dilution

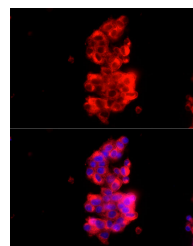
WB	1:500-1:2000
IF	1:10-1:100

Data



Western blot analysis of extracts from wild type (WT) and RAB27A knockdown (KD) U-87MG(KD) cells using RAB27A Polyclonal Antibody at 1:1000 dilution.

Observed Mw:27KDa
Calculated Mw:24kDa



Immunofluorescence analysis of HepG2 cells using [KD Validated] RAB27A Polyclonal Antibody at dilution of 1:150 (40x lens). Blue: DAPI for nuclear staining.

Preparation & Storage

Storage Store at -20°C. Avoid freeze / thaw cycles.

Background

The protein encoded by this gene belongs to the small GTPase superfamily, Rab family. The protein is membrane-bound and may be involved in protein transport and small GTPase mediated signal transduction. Mutations in this gene are associated with Griscelli syndrome type 2. Alternative splicing occurs at this locus and four transcript variants encoding the same protein have been identified.

For Research Use Only