

# EBAG9 Polyclonal Antibody

Catalog Number:E-AB-60510

**Note:** Centrifuge before opening to ensure complete recovery of vial contents.

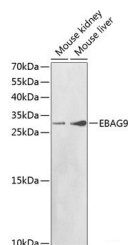
## Description

|                     |   |
|---------------------|---|
| <b>Reactivity</b>   | Human,Mouse                                     |
| <b>Immunogen</b>    | Recombinant fusion protein of human EBAG9       |
| <b>Host</b>         | Rabbit  |
| <b>Isotype</b>      | IgG   |
| <b>Purification</b> | Affinity purification                           |
| <b>Conjugation</b>  | Unconjugated                                    |
| <b>Formulation</b>  | PBS with 0.02% sodium azide,50% glycerol,pH7.3. |

## Applications Recommended Dilution

|           |              |
|-----------|--------------|
| <b>WB</b> | 1:500-1:2000 |
|-----------|--------------|

## Data



Western blot analysis of extracts of various cell lines using EBAG9 Polyclonal Antibody at 1:1000 dilution.

**Observed Mw:28kDa**  
**Calculated Mw:24kDa/29kDa**

## Preparation & Storage

**Storage** Store at -20°C. Avoid freeze / thaw cycles.

## Background

This gene was identified as an estrogen-responsive gene. Regulation of transcription by estrogen is mediated by estrogen receptor, which binds to the estrogen-responsive element found in the 5'-flanking region of this gene. The encoded protein is a tumor-associated antigen that is expressed at high frequency in a variety of cancers. Alternate splicing results in multiple transcript variants. A pseudogene of this gene has been defined on chromosome 10.

## For Research Use Only

A Reliable Research Partner in Life Science and Medicine

Toll-free: 1-888-852-8623

Web: [www.elabscience.com](http://www.elabscience.com)

Tel: 1-832-243-6086

Email: [techsupport@elabscience.com](mailto:techsupport@elabscience.com)

Fax: 1-832-243-6017