

ODC1 Polyclonal Antibody

Catalog No. E-AB-60518

Note: Centrifuge before opening to ensure complete recovery of vial contents.

Description

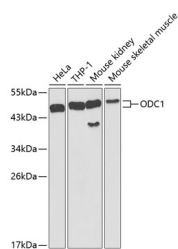
Reactivity	Human, Mouse, Rat
Immunogen	Recombinant fusion protein of human ODC1 (NP_002530.1).
Host	Rabbit
Isotype	IgG
Purification	Affinity purification
Conjugation	Unconjugated
Buffer	PBS with 0.02% sodium azide, 50% glycerol, pH7.3.

Applications Recommended Dilution

WB 1:500-1:2000 IHC

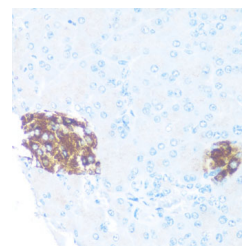
1:50-1:200

Data



Western blot analysis of extracts of various cell lines using ODC1 Polyclonal Antibody at dilution of 1:1000.

Observed Mw:51kDa
Calculated Mw:51kDa



Immunohistochemistry of paraffin-embedded Rat islets of langerhans using ODC1 Polyclonal Antibody at dilution of 1:100 (40x lens).

Preparation & Storage

Storage Store at -20°C. Avoid freeze / thaw cycles.

Background

This gene encodes the rate-limiting enzyme of the polyamine biosynthesis pathway which catalyzes ornithine to putrescine. The activity level for the enzyme varies in response to growth-promoting stimuli and exhibits a high turnover rate in comparison to other mammalian proteins. Originally localized to both chromosomes 2 and 7, the gene encoding this enzyme has been determined to be located on 2p25, with a pseudogene located on 7q31-qter. Multiple alternatively spliced transcript variants encoding distinct isoforms have been identified.

For Research Use Only