

(KO Validated) NT5E/CD73 Polyclonal Antibody

Catalog Number:E-AB-60564



Note: Centrifuge before opening to ensure complete recovery of vial contents.

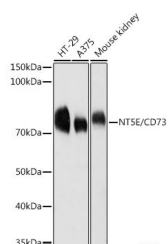
Description

Reactivity	Human,Mouse,Rat
Immunogen	Recombinant fusion protein of human NT5E / CD73
Host	Rabbit
Isotype	IgG
Purification	Affinity purification
Conjugation	Unconjugated
Formulation	PBS with 0.01% thiomersal,50% glycerol,pH7.3.

Applications Recommended Dilution

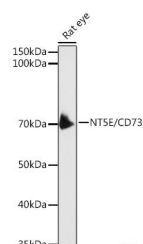
WB	1:500-1:2000
IHC	1:50-1:200
IF	1:50-1:200

Data

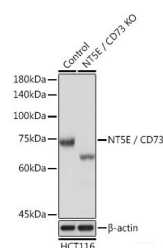


Western blot analysis of extracts of various cell lines using CD73/NT5E Polyclonal Antibody at 1:1000 dilution.

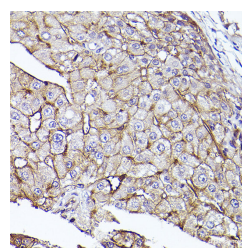
Observed Mw:70KDa
Calculated Mw:57kDa/63kDa



Western blot analysis of extracts of Rat eye using CD73/NT5E Polyclonal Antibody at 1:1000 dilution.



Western blot analysis of extracts from normal (control) and CD73/NT5E Polyclonal antibody knockout (KO) HCT116 cells using CD73/NT5E Polyclonal antibody at 1:3000 dilution.



Immunohistochemistry of paraffin-embedded human liver cancer using [KO Validated] CD73/NT5E Polyclonal antibody at dilution of 1:50 (40x lens). Perform high pressure antigen retrieval with 10 mM citrate buffer pH 6.0 before commencing with IHC staining protocol.

For Research Use Only

A Reliable Research Partner in Life Science and Medicine

Toll-free: 1-888-852-8623

Web: www.elabscience.com

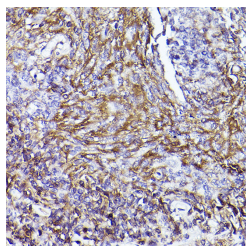
Tel: 1-832-243-6086

Email: techsupport@elabscience.com

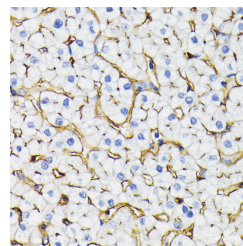
Fax: 1-832-243-6017

(KO Validated) NT5E/CD73 Polyclonal Antibody

Catalog Number:E-AB-60564



Immunohistochemistry of paraffin-embedded human tonsil using [KO Validated] CD73/NT5E Polyclonal antibody at dilution of 1:50 (40x lens). Perform high pressure antigen retrieval with 10 mM citrate buffer pH 6.0 before commencing with IHC staining protocol.



Immunohistochemistry of paraffin-embedded human liver cancer using [KO Validated] CD73/NT5E Polyclonal antibody at dilution of 1:50 (40x lens). Perform high

Preparation & Storage

Storage Store at -20°C. Avoid freeze / thaw cycles.

Background

The protein encoded by this gene is a plasma membrane protein that catalyzes the conversion of extracellular nucleotides to membrane-permeable nucleosides. The encoded protein is used as a determinant of lymphocyte differentiation. Defects in this gene can lead to the calcification of joints and arteries. Two transcript variants encoding different isoforms have been found for this gene.

For Research Use Only

A Reliable Research Partner in Life Science and Medicine

Toll-free: 1-888-852-8623

Web: www.elabscience.com

Tel: 1-832-243-6086

Email: techsupport@elabscience.com

Fax: 1-832-243-6017