

## (KO Validated) EGFR Polyclonal Antibody

Catalog No. E-AB-63241

**Note:** Centrifuge before opening to ensure complete recovery of vial contents.

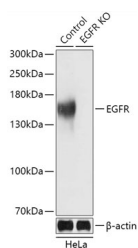
### Description

<b>Reactivity</b>	Human, Mouse, Rat
<b>Immunogen</b>	A synthetic peptide of human EGFR (NP_005219.2).
<b>Host</b>	Rabbit
<b>Isotype</b>	IgG
<b>Purification</b>	Affinity purification
<b>Conjugation</b>	Unconjugated
<b>Buffer</b>	PBS with 0.02% sodium azide, 50% glycerol, pH7.3.

### Applications Recommended Dilution

**WB** 1:500-1:1000

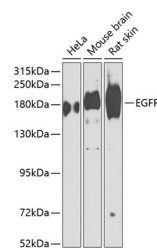
### Data



Western blot analysis of extracts from normal (control) and EGFR knockout (KO) HeLa cells using EGFR Polyclonal Antibody at dilution of 1:3000.

**Observed Mw:175kDa**

**Calculated Mw:44kDa/69kDa/77kDa/134kDa**



Western blot analysis of extracts of various cell lines using EGFR Polyclonal Antibody at dilution of 1:1000.

### Preparation & Storage

**Storage** Store at -20°C. Avoid freeze / thaw cycles.

### Background

The protein encoded by this gene is a transmembrane glycoprotein that is a member of the protein kinase superfamily. This protein is a receptor for members of the epidermal growth factor family. EGFR is a cell surface protein that binds to epidermal growth factor. Binding of the protein to a ligand induces receptor dimerization and tyrosine autophosphorylation and leads to cell proliferation. Mutations in this gene are associated with lung cancer.

### For Research Use Only