

IKK beta Polyclonal Antibody

Catalog No. E-AB-60595

Note: Centrifuge before opening to ensure complete recovery of vial contents.

Description

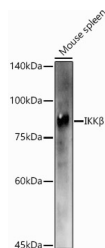
| | |
|---------------------|---|
| Reactivity | Human,Mouse,Rat |
| Immunogen | A synthetic peptide of human IKK beta |
| Host | Rabbit |
| Isotype | IgG |
| Purification | Affinity purification |
| Conjugation | Unconjugated |
| Buffer | PBS with 0.05% proclin300,50% glycerol,pH7.3. |

Applications

Recommended Dilution

| | |
|------------|--------------|
| WB | 1:500-1:2000 |
| IHC | 1:50-1:200 |

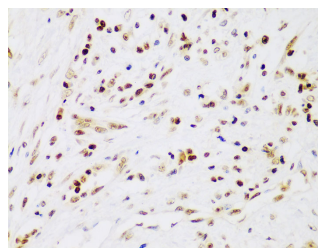
Data



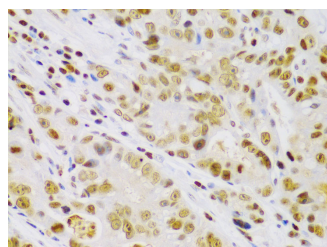
Western blot analysis of extracts of Mouse spleen using IKK β Polyclonal Antibody at 1:1000 dilution.

Observed Mw:87KDa

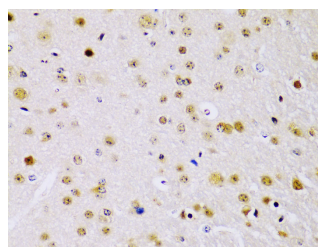
Calculated Mw:29kDa/79kDa/85kDa/86kDa



Immunohistochemistry of paraffin-embedded human liver cancer using IKK β Polyclonal Antibody at dilution of 1:100 (40x lens). Perform microwave antigen retrieval with 10 mM PBS buffer pH 7.2 before commencing with IHC staining protocol.



Immunohistochemistry of paraffin-embedded human gastric cancer using IKK β Polyclonal antibody at dilution of 1:100 (40x lens). Perform microwave antigen retrieval with 10 mM PBS buffer pH 7.2 before commencing with IHC staining protocol.



Immunohistochemistry of paraffin-embedded mouse brain using IKK β Polyclonal antibody at dilution of 1:100 (40x lens). Perform microwave antigen retrieval with 10 mM PBS buffer pH 7.2 before commencing with IHC staining protocol.

For Research Use Only

Preparation & Storage

Storage Store at -20°C. Avoid freeze / thaw cycles.

Background

The protein encoded by this gene phosphorylates the inhibitor in the inhibitor/NF-kappa-B complex, causing dissociation of the inhibitor and activation of NF-kappa-B. The encoded protein itself is found in a complex of proteins. Several transcript variants, some protein-coding and some not, have been found for this gene.