

# CUL1 Polyclonal Antibody

Catalog Number:E-AB-60629

**Note:** Centrifuge before opening to ensure complete recovery of vial contents.

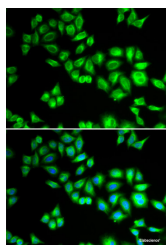
## Description

|                     |   |
|---------------------|---|
| <b>Reactivity</b>   | Human,Mouse,Rat   |
| <b>Immunogen</b>    | Recombinant fusion protein of human CUL1 (NP_003583.2). |
| <b>Host</b>         | Rabbit  |
| <b>Isotype</b>      | IgG   |
| <b>Purification</b> | Affinity purification                                   |
| <b>Conjugation</b>  | Unconjugated  |
| <b>Formulation</b>  | PBS with 0.02% sodium azide, 50% glycerol, pH7.3.       |

## Applications Recommended Dilution

|           |            |
|-----------|------------|
| <b>IF</b> | 1:10-1:100 |
|-----------|------------|

## Data



Immunofluorescence analysis of HeLa cells using  
CUL1 Polyclonal Antibody

## Preparation & Storage

|                |   |
|----------------|---|
| <b>Storage</b> | Store at -20°C. Avoid freeze / thaw cycles. |
|----------------|---|

## Background

CUL1 (Cullin 1) is a Protein Coding gene. Diseases associated with CUL1 include Vaccinia and Weaver Syndrome. Among its related pathways are Regulation of Wnt-mediated beta catenin signaling and target gene transcription and FBXW7 Mutants and NOTCH1 in Cancer. Gene Ontology (GO) annotations related to this gene include ubiquitin protein ligase binding. An important paralog of this gene is CUL2.

## For Research Use Only

A Reliable Research Partner in Life Science and Medicine

Toll-free: 1-888-852-8623

Web: [www.elabscience.com](http://www.elabscience.com)

Tel: 1-832-243-6086

Email: [techsupport@elabscience.com](mailto:techsupport@elabscience.com)

Fax: 1-832-243-6017