

LETMD1 Polyclonal Antibody

Catalog Number:E-AB-60638



Note: Centrifuge before opening to ensure complete recovery of vial contents.

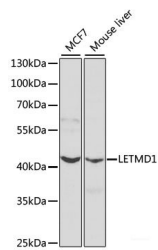
Description

Reactivity	Human,Mouse,Rat
Immunogen	Recombinant fusion protein of human LETMD1 (NP_056231.3).
Host	Rabbit
Isotype	IgG
Purification	Affinity purification
Conjugation	Unconjugated
Formulation	PBS with 0.02% sodium azide, 50% glycerol, pH7.3.

Applications Recommended Dilution

WB	1:500-1:2000
IHC	1:50-1:200

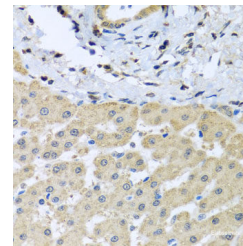
Data



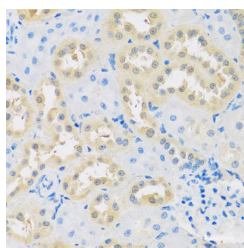
Western blot analysis of extracts of various cell lines using LETMD1 Polyclonal Antibody at dilution of 1:1000.

Observed Mw:41kDa
Calculated

Mw:11kDa/17kDa/23kDa/35kDa/41kDa/43kDa



Immunohistochemistry of paraffin-embedded Human liver damage using LETMD1 Polyclonal Antibody at dilution of 1:100 (40x lens).



Immunohistochemistry of paraffin-embedded Rat kidney using LETMD1 Polyclonal Antibody at dilution of 1:100 (40x lens).

Preparation & Storage

Storage Store at -20°C. Avoid freeze / thaw cycles.

Background

This gene encodes a mitochondrial outer membrane protein. It has a potential role in tumorigenesis, which may result

For Research Use Only

A Reliable Research Partner in Life Science and Medicine

Toll-free: 1-888-852-8623

Web: www.elabscience.com

Tel: 1-832-243-6086

Email: techsupport@elabscience.com

Fax: 1-832-243-6017

LETMD1 Polyclonal Antibody

Catalog Number: E-AB-60638



from negative regulation of the p53 tumor suppressor gene. Alternatively spliced transcript variants have been noted for this gene.

For Research Use Only

A Reliable Research Partner in Life Science and Medicine

Toll-free: 1-888-852-8623

Tel: 1-832-243-6086

Fax: 1-832-243-6017

Web: www.elabscience.com

Email: techsupport@elabscience.com